



Moon Planting- True and False

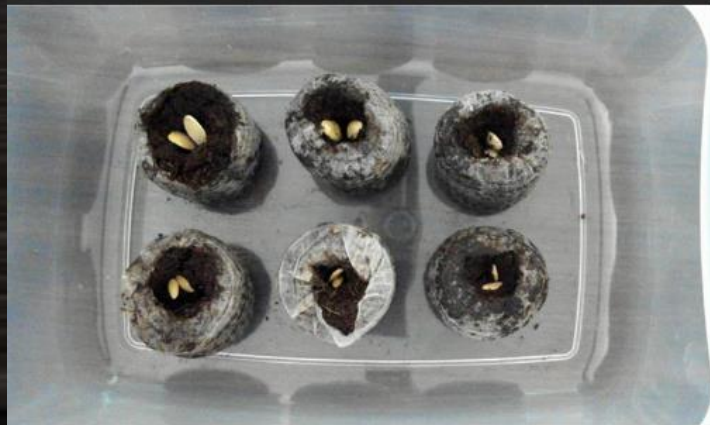
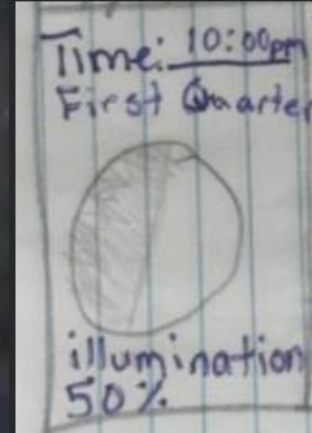
By: RH

Hypothesis

- According to The Old Farmer's Almanac, moon planting “is the idea that the lunar cycle affects plant growth. Just as the Moon's gravitational pull creates the tides of the oceans, it also creates more moisture in the soil, which encourages growth”
- I believe that this is a false because in the beginning of the hole planting that's why I thought it was false.
- I will use observations and data collection to answer the question, Does the moon affect how plants grow?

Data Collection


- Day 0 Planting Day
- Moon Phase- Waxing moon illumination
- Seeds planted= Zucchini and Cantaloupe



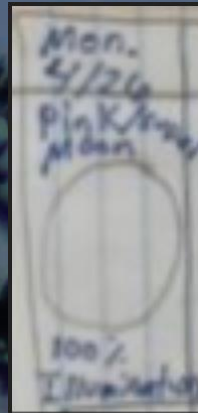
1st different observation
4-22-21



Plant needed water

Thursday
4/22
8:50pm

Waxing
Gibbous

Next Big Observation
We Have a sprout
Monday 4-26-21



Moon phase

Taking care of Sprouts

Watering Day! 4-28-21

Day 9



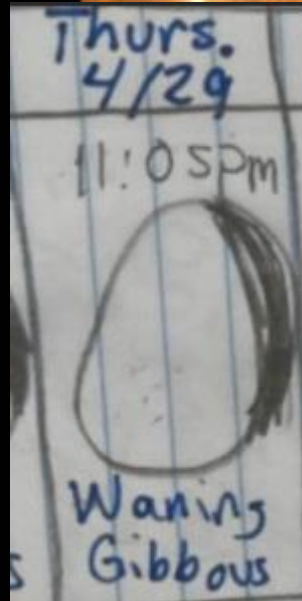
Still Taking Care of Sprouts
Next Watering day! 5-3-21



Waning moon plants
4-29-21

Planted new cantaloupe and zucchini seeds

Moon phase



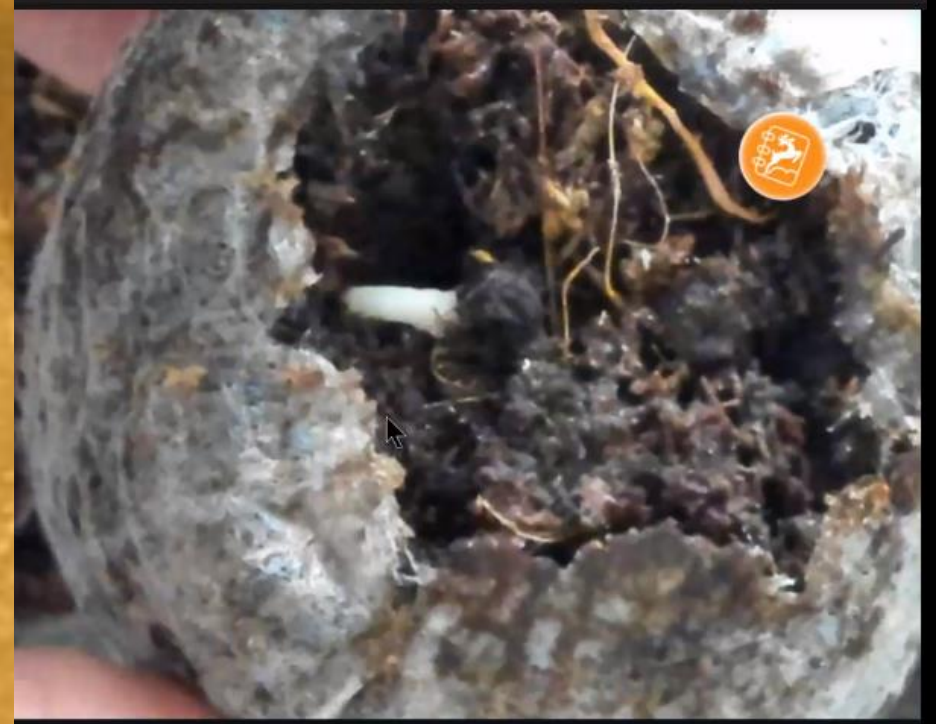
1st Watering Day!!!
Day 4



We got Sprouts!!!

Day 8

5-7-21



Side By Side Comparison



Which One Looks Stronger

Conclusion

According to my eyes I think that the moon did something waxing plants because they grew faster and stronger than the Waning plants.
2nd The Waning plants are going slower to grow it barley is even growing a plant. That's my perspective.

